

Quick Installation Guide

300Mbps Wireless N Router

LF-R390



Introduction

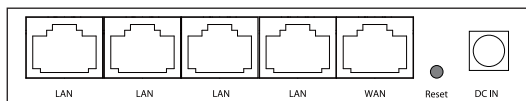
Thank you for purchasing the LAFALINK Wireless Router.
This manual suit for quick installation of Indoor wireless router.

Hardware

● Interface



Front



Back

The following parts (view from left to right) are located on the rear panel.

LAN Ports (1/2/3/4): Connect your Ethernet devices, like PCs, to these ports.

WAN Ports: This port is where you'll connect to the DSL/Cable modem.

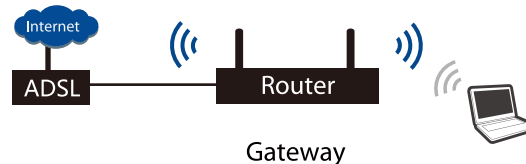
Reset Button: When you need to reset the router, press and hold the Reset button for about 12 seconds until all LEDs go on, then release the button.

USB Ports: Connect your USB storage device to this port.

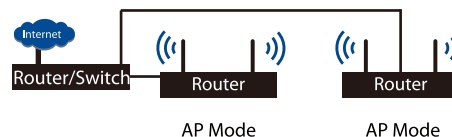
DC IN: This port is where you will connect the power socket via the provided power adapter.

Operation Mode

– Gateway Mode(Main)



– Access Point Mode



1 Connecting the Hardware

If your Internet connection is through an Ethernet cable from the wall instead of through a DSL / Cable / Satellite modem, connect the Ethernet cable directly to the router's WAN port, then follow steps 4 to complete the hardware connection.

- 1 Place the router horizontally and extend the antennas to the maximum angle.

Note: For best performance, horizontal installation is recommended. Antenna direction and position can affect performance in vertical installation situations.

- 3 Connect the Power Adapter to the Socket, turn on the wireless router.

- 2 Connect the modem to the WAN port on your router with an Ethernet cable.

- 4 Connect the computer to the LAN port on your router with an Ethernet cable.



2 Log in the Web Management

With a Web-based utility, it is easy to configure and manage the router. The Web-based utility can be used on any Windows, Macintosh/UNIX OS with a Web browser, such as Microsoft Internet Explorer, Mozilla Firefox or Apple Safari. Follow the steps below to log into your router.

1. Set up the TCP/IP Protocol in **Obtain an IP address automatically** on your computer.
2. Visit **192.168.8.1**, and log in with the username and password you've set for the router. The default one is **admin** for both username and password.



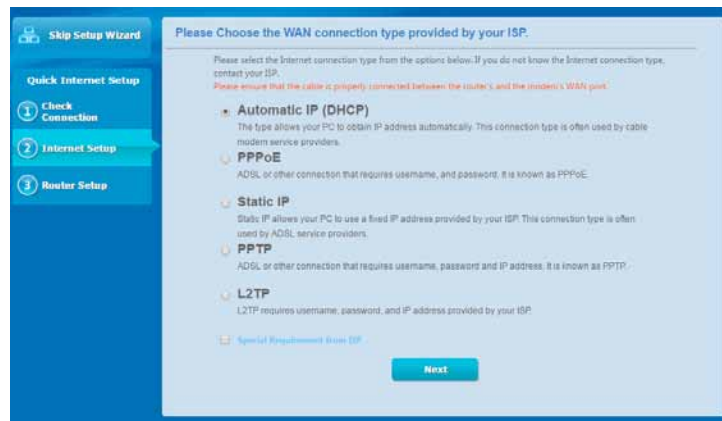
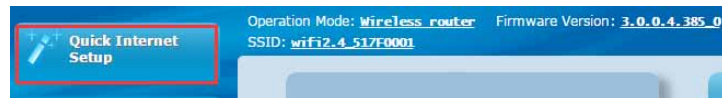
3 Set Up Internet Connection

The Quick Internet Setup will guide you through the process to set up your router to access the Internet.

1. Change the **languages** on the top of the page.



2. Click **Quick Internet Setup** on the top of the page. Router will detect your connection type automatically. Here we take the PPPoE type as an example.



3. Click **PPPoE** type, and click the Next.

(To be continued...)

3 Set Up Internet Connection

Note:

You can also choose the connection type manually. Contact your ISP if you are not sure about the Internet connection information.

Automatic IP (DHCP)

The type allows your PC to obtain IP address automatically. This connection type is often used by cable modem service providers.

PPPoE

ADSL or other connection that requires username, and password. It is known as PPPoE.

Static IP

Static IP allows your PC to use a fixed IP address provided by your ISP. This connection type is often used by DSL service providers.

- If you use DSL line and you are only provided an account name and a password by your ISP, choose PPPoE.
- If you use cable TV or fiber cable, choose Dynamic IP.
- If you are provided more information such as IP address, Subnet Mask and Default Gateway, choose Static IP.

5. In this case, the router automatically detects PPPoE as the connection type. Type in the user name and password from your ISP, and then click Next.

Account Setting

User Name



Password



Show password

Obtain the account name and password from your ISP.

Previous

Next

6. Configure your wireless settings. And then click Apply.

Wireless Setting

Do you want to use the previous wireless security settings? Yes No

Assign a unique name or SSID (Service Set Identifier) to help identify your wireless network.

2.4 GHz - Security

Network Name (SSID)

wifi2.4_517F0001

Network Key

Enter a network key between 8 and 63 characters (letters, numbers or a combination) or 64 hex digits. The default wireless security setting is WPA2-Personal AES. If you do not want to set the network security, leave the security key field blank, but this exposes your network to unauthorized access.

Apply

7. Confirm the setting, and click the Next, the router will reboot.

Completed Network Configuration Summary

System Time: Sat, Jan 01 08:03:42 2011 (GMT+08:00)

*Reminder: Your system time has not been synchronized with a NTP server.

Wireless

Network Name (SSID)

wifi2.4_517F0001

Wireless Security

Open System

WAN

WAN Connection Type

Automatic IP

WAN IP

0.0.0.0

LAN

LAN IP

192.168.8.1

MAC

78:A3:51:7F:00:01

Next

4 Advanced Setting

– Create Guest Network

1. Create a 2.4GHz guest network according to your needs.

Guest Network

The Guest Network provides Internet connection for guests but restricts access to your local network.

2.4GHz * Turn Wi-Fi on to operate the Guest Network. [Go](#)

Network Name (SSID)

Authentication Method

Network Key

Time Remaining

Access Intranet

2. The Guest Network provides Internet connection for guests but restricts access to your local network.

Guest Network index	1
Network Name (SSID)	wifi2.4_517F0001_Guest1
Authentication Method	Open System
Access time	<input type="radio"/> hours <input type="text"/> minutes <input checked="" type="radio"/> Limitless
Access Intranet	Disable
Enable MAC Filter	No You must go to enable Wireless MAC Filter

– QoS Setting

1. Enable QoS and set bandwidth allocation. Input the maximum upload and download bandwidth provided by your service provider. 1Mbps is equal to 1000Kbps.

Traffic Manager - QoS

QoS to configuration

The Quality of Service (QoS) ensures the network's speed performance. The default rule sets online gaming and Web Surfing as the highest priority and are not influenced by P2P applications (peer-to-peer applications such as BitTorrent). To enable QoS function, Click the QoS slide switch, and fill in the upload and download bandwidth fields. Get the bandwidth information from your ISP. If you want to prioritize specific network applications and network devices, select your preferred priority from the User-defined QoS rules.

Enable Smart QoS

Upload Bandwidth Mb/s

Download Bandwidth Mb/s

– Parental Controls

This function allows you to block inappropriate, explicit and malicious websites, and controls access to specified websites at specified time.

Enable Parental Controls

System Time **Sat, Jan 01 08:10:27 2011**
*Reminder: Your system time has not been synchronized with a NTP server.

Clock Format Allow Deny

Active Schedule

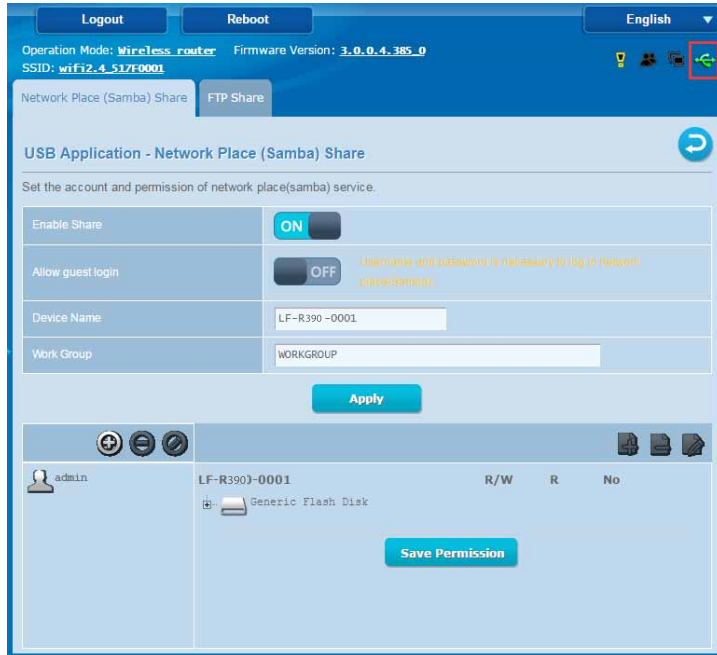
Clients Name PC-20150310TIBT

Select All	Sun	Mon	Tue	Wed	Thu	Fri	Sat
00 ~ 01							
01 ~ 02							
02 ~ 03							
03 ~ 04							

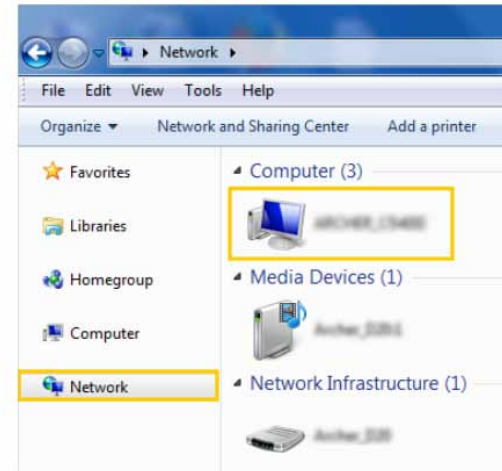
4 Advances Setting

– USB Application

1. Insert your USB storage device into the router's USB port directly or using a USB cable.



2. By default, all the network clients can access all folders on your USB disk. Refer to the following table for access instructions.



3. Set the account and permission of FTP service. Access the Storage using ftp://192.168.8.1, the User and password is all admin.



– Dual WAN

Provides Dual WAN support. Select Failover mode to use a secondary WAN for backup network access. Select Load Balance mode to optimize bandwidth, maximize throughput, minimize response time, and prevent data overload for both WAN connections.

WAN - Dual WAN

LF-R200 provides Dual WAN support. Select Failover mode to use a secondary WAN for backup network access. Select Load Balance mode to optimize bandwidth, maximize throughput, minimize response time, and prevent data overload for both WAN connections.

Basic Config	
Enable Dual WAN	<input checked="" type="checkbox"/> ON
Primary WAN	WAN
Secondary WAN	Ethernet LAN <input type="button" value="v"/> LAN Port 2 <input type="button" value="v"/>
Dual WAN Mode	Load Balance <input type="button" value="v"/> <small>Load Balance optimizes resource use and maximizes throughput. Use Failover mode for better performance if the difference of bandwidth between the Primary and Secondary WAN is more than 10Mbps.</small>
Load Balance Configuration	3 : 1

5 Test the Wireless Network

After basic configuration, if you want use wireless internet, you can configure computer wireless connection as local connection settings mentioned above. Right click "wireless network configuration", chose "check available wireless connection", find the connecting name you have set before. And test the wireless network's performance.

LAN or High-Speed Internet



Appendix I Trouble Shooting

Symptoms	Treatment
Forget the login user name and passwords	Restore to factory default
Can't login AP through WEB management	<ol style="list-style-type: none"> 1. Pls make sure the PC and AP's IP Address are in same network segment, can be checked through Ping: PC start--input CMD in Run, then ping 192.168.8.1 2. Login after Restore AP to factory default 3. Make sure there isn't any equipment take IP address of 192.168.8.1 in AP networking 4. Check your computer and network cable to avoid any problem, recommend to use unshielded twisted pair 10/100M Ethernet cable.
Forget the AP's SSID and passwords	Restore to factory default
Can not got IP Address	<ol style="list-style-type: none"> 1. Check the AP's DHCP and make it enable in Gateway mode and WISP mode 2. Check the connection between AP and the top networking in AP and Repeater mode
No Power indicator	<ol style="list-style-type: none"> 1. If DC Power, check the local power supplier