

## **Notice**

**Please read the following information before using:**

**In the chemical plant, gas station and other explosives near, please shut down.**

**Don't use watch on the plane. Please check whether the mobile phone is set to start before boarding. Special attention should be paid to the use of Watch in the vicinity of the cardiac pacemaker, hearing aids, and other medical electronic devices. Your Watch may interfere with these devices. Do not disassemble the watch, if your watch is in trouble, please contact us Specify the after-sales service center contact.**

**Charging must be in good ventilation and heat dissipation environment, and away from flammable and explosive goods.**

**In order to avoid demagnetization, please keep the Watch away from the magnetic material, such as magnets, credit cards etc...**

**Avoid under the environment of temperature too high or too low , and exposing using the watch to strong sunlight or high humidity environment.**

**Please do not use wet cloth or liquid containing detergent to clean your watch.**

**Your watch has a recording function, please use these functions in accordance with the relevant laws and regulations, the unauthorized recording may violate the laws and regulations.**

### **warning**

**The company will not bear any responsibility for the consequences of not complying with the above proposal or improper use.**

**As described in this manual content doesn't accord with your watch, please refer to actual.**

**The company shall have the right to change specifications at any time, without prior notice.**

Your watch supports 3G WCDMA network , and compatible GSM network.

**When using this equipment functions, please observe the laws and respect local customs, as well as the privacy and legitimate rights and interests of others (including copyright).**

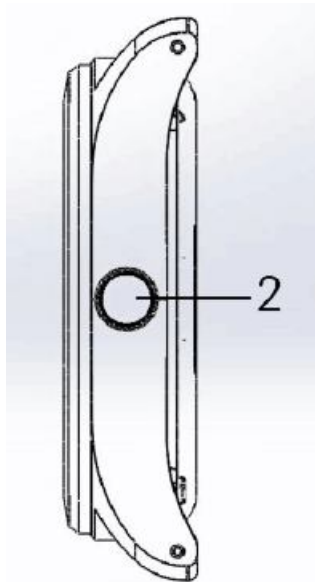
You may not copy, modify, or transfer some protected image, music and other content.

When the use of the WATCH may cause interference or danger, please don't boot up.

**WATCH can save a lot of useful information for you, for the equipment in use process please be sure to make a backup to save all important information.**

**When you Connect any equipment, please read the user manual of the device for detailed safety instructions Don't connect incompatible products.**

**Never remove the watchband.**



**watch Hardware and appearance**

when you open the watch box please check the box includes:

1. watch
2. Charging base
3. watch adapters USB wire
4. Special screwdriver

**Side button**

Press the button to go back to the Home Menu

press on 2 seconds out of the watch state shortcut set.  
Crash problems, press on 10seconds can be reset, equivalent to a battery.

### **watch the use of the charging dock**

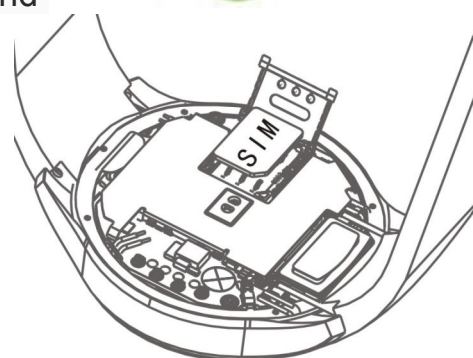
the watch can be charged with the method of contact charge.when needs charging,the user can charge at the bottom of the seat and through the charging adapter USB cable to connect a side USB port to realize the charge; And computer data exchange can be through the charging seat.

### **watch the use of SIM card**

The watch supports the use of NANO SIM card, through the Watch, you can save a lot of communication ,parameters required in the SIM card, and can save the personal information, including the PIN number, the phone book, short message and other additional system services.

Using communication function, please make sure that the shutdown states, special use screwdriver to watch after the shell, insert the card into the SIM card slot.

Warning: don't distort or scratch the NANO SIM card; also don't let it static, dust or flooding.



### **watch support functions of heart rate**

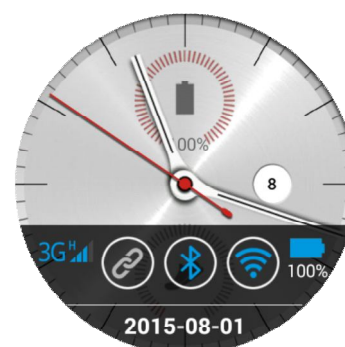
#### **meter**

ensure the bracelet to wear not too tight, Should be able to move back and forth in the wrist position. When using the heart rate, the watch should be flat on carpal bone above a refers to the wide position.

Long time friction and bind may irritate your skin, so for a long time after wearing, to remove the watch at the appropriate time to rest.

### **watch software and instructions the home page**

The main screen has a plurality of panels. Slide to the left to see all kinds of notices. In the clock



interface to the left slide into the function of the shortcut menu, the clock interface to slide up the signal bar, click the screen in the clock interface can open the program list. From the top of the screen, slide back on the top of the screen.

### watch the application list

List included the basic application: the phone book, call records, information, browser, Settings, file management, game, health, watch assistant, alarm clock, the recording, downloads, music, weather and other applications.

The user can touch the icon to enter the required applications.

### watch dial phone

watch may record your incoming telegram, call out and Missed calls, touch your dial-up icon in the application, enter the page of phone call.

1. Enter the phone number ( Archdeacon before may need Area code), then press the call button.
2. Dial interface sliding to the left into the phone records, can call the recent calls the phone number in the list.



### messages

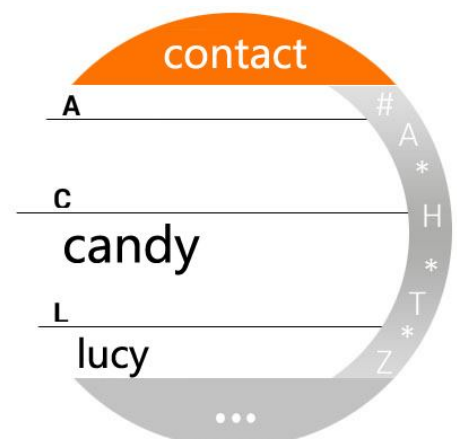
The application of touch in the center of the "message" icon into the news pages. Touch the existing information can reply.

Touch on the corner of the icon to enter the new news editor, in name or number), enter the number, name or touch the portrait icon into the phone book send contact information. Input information content type in the information office, after the completion of the touch input box below the icon to send information.

The upper right corner of the icon contains: common phrases, settings, accessories.



### contact



Touch the application list "contact" page icon to enter the phone book function. Icon to enter the phone book function page.

Watch the first alphabetical order by last name contacts, home page show only the contact name in the phone book.

The user can drag the right letters quickly find contacts, watch allows users to choose business card information is stored. The optional storage location including watch, NANO SIM card.

Icon at the bottom of the contact interface features include: add contact, synchronization of directories, delete all functions.

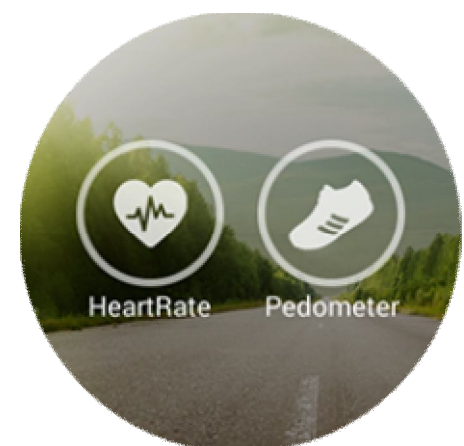


## set

Provide dial setting, sound, display, connections, power saving mode, language and input method, reset the equipment, equipment management, on the equipment.

## health

Health includes heart rate pedometer and Step meter application steps today and calories contained in conversion, and the list of steps taken in recent days to do statistics, steps today 12 PM in the day automatically reset. Heart rate meter in the heart to keep the heart peaceful, static test should wear flat on carpal bone above a refers to the location of the wide, and asked the lens surface clean and transparent.



## watch application

### Browser

Fast Internet access via LAN or 3G network.

### The alarm clock

Set the alarm clock.

### Record

Click the icon to start the recording screen center, pop-up store, giving up options, clicks save, can save the recording, enter the

recording list, choose to play the recording.

### **Barometer**

Through the network real-time updating local pressure.

### **The weather**

Updated in real time through the network of local weather

### **File management**

You can see all the files of the mobile phone, you can also browse folders, the new folder, edit etc.

### **Download**

Files saved on the Internet can be viewed in this menu, the progress and open

### **Music Player**

Watch built-in music player, support for Bluetooth headset

Music Player page displays are currently playing songs, touch the middle icon to play or pause songs. Touch above the speaker icon into the sound size adjustment. Touch the middle icon on the left on the first play. Touch the middle icon on the right side play the next song. After entering the playback list page, the user can according to their own preferences to find their favorite music, touch belongs column eyes started to play. Automatically return to the music player page after the selection is played.

### **Typewriting**

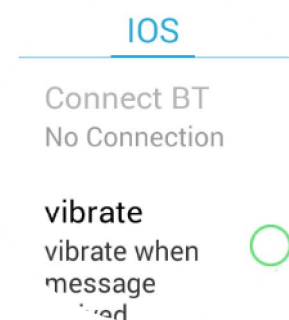
Watch can be used English squares and full keyboard, and built-in voice input method. Users can complete the input method by setting the language and input method to complete the switch between.

### **Watch app store**

Due to the conventional software market are not based on circular screen for software development, our joint third party software company will continue to develop kinds of applications, the market application on-line: parking, calendar, stock health reminders, and application of news, the exchange rate, the new dial.

### **Bluetooth connection of Apple IOS**

opening the bluetooth in the IOS phone system, Find (**Watch-NC**) , Click on( **Watch-NC**), matching of watch and phone is complete.You can be achieved with phone connection. watch can receive notifications and calls from the connected phone , so that you won't miss any important information.



On watch: Slip to the IOS Bluetooth property page,Set the information push.

\*IOS8.0 version above support

### watch Android assistant

Open the application screen, click on the watch assistant, and row to Android Bluetooth properties page, Set information push .

### Android

Connect BT  
No Connection

Missed  
SMS  
Counts



### watch Android assistant

Open the application screen, click on the watch assistant, the Bluetooth based communication software. Mobile terminal needs to install a corresponding app application, Download address ;

<http://www.app2open.com/download>,



Open the watch assistant, find the Bluetooth paired watch at the top right corner of the interface, and select your watch, Then the following functions are available for you to enjoy it.