

H100 PPT Presenter

User's Guide

Support Windowsxp and MacOs
10.10 & above verisions

H100 Features

This guide describes how to use the PPT presenter H100 and run the operating software. Be sure that you read this guide and understand its contents before using it.

1. It is a wireless presenter with a built-in lithium battery, display digitron and vibrating motor, plus the somatic mouse function.

2. The receiver has a built-in TF card socket. If the version you purchased includes the TF card, it already has u-disk function. The computer-aided software is stored in the u-disk.

3. This H100 product replaces the laser transmitter that might hurt user's eyes, By using the following three digital scene modes, H100 operation is more convenient and powerful. However, you need to run the computer-aided software prior to using it.

Spotlight Mode



Magnifier Mode



Digi-Laser Mode



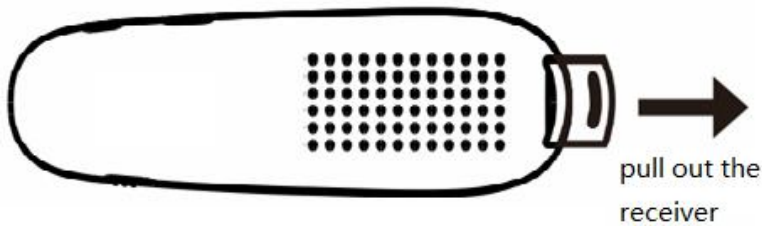
4. You can set up the alarm timer before meeting. When the meeting is over, the presenter will alert you by vibrating. You can check the remaining time during the meeting (remaining time can be displayed by the presenter).

5. The receiver anti-lost function can assist you not to remember unplugging the USB receiver after meeting is finished.

I. H100 Operation Steps

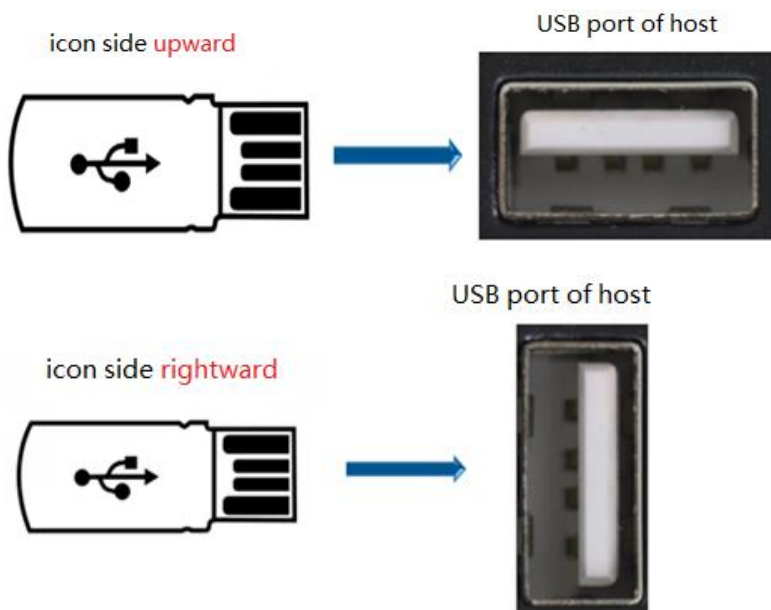
Step 1: Pull-out Receiver From Presenter

There is a build-in receiver on the back of presenter H100. Please pull it out before using.



Step 2: Insert The Receiver Into The USB Port Of The Computer

Note : Both sides of the receiver can be inserted into the USB port of the computer. But only one of them is correct way. Please refer to the following method:



Step 3: The Receiver Establish Connection With The Computer

After the receiver is inserted into the USB port, it needs to establish a connection with the computer. This step can be completed within seconds generally. However for the following two cases, we need to wait a few more seconds or minutes.

3.1 If the computer is inserted for the first time by the receiver, the computer will spend several minutes to establish a connection with the receiver. The actual time depends on how fast the computer processes it (If you have

to wait for over 10 minutes, and the prompt message does not disappear, please pull it out and insert it again for retry).

3.2 For earlier Windows operating systems, after **unplugging the receiver and immediately reinserting it again**, you'd have to wait several seconds.

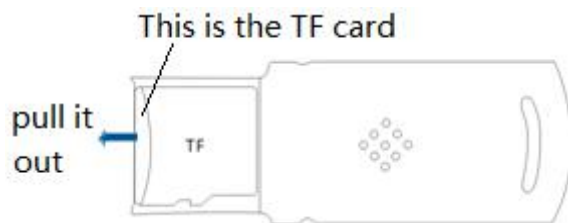
A simple way to check the completion of this step is to turn on the presenter and press and hold the key ③. When the mouse pointer can move with your wrist indicates that it is working correctly.

Note: After the receiver is plugged in, a removable disk appears on the computer. If the version you purchased includes the TF card, it has already a u-disk function. The computer aided software and instructions are stored in the disk.

To increase the memory capacity, by replacing and inserting a larger capacity TF card(**maximum 32GB**). Please ensure the TF card is inserted properly according to direction marked on the receiver.

Note: **Don't push TF card so hard that might damages the socket.**

TF card is not essential. It is just to provide users with a removable disk that can store documents.



Step 4: Locate The Computer Aided Software

H100 have many more powerful functions. However, you need to run the computer-aided software first. So where is the software? This step is to guide you how to locate the H100 software.

4.1 Software Is Stored In The U-Disk Of Receiver

If the TF card has been loaded in the receiver, the software are stored in the "H100" folder of the U-disk.

4.1.1 Windows Version

There are two versions of software for Windows operating system. You can run one of them based on your Windows version. **Mostly, the Presenter_xp.exe can run from windows XP to windows 10.**

Removable Disk: \H100\win8_10\PresenterH100.exe-----can run on win8-win10

Removable Disk : \H100\winxp_7\PresenterH100_xp.exe—can run on winxp-win7

4.1.2 MacOS Version

Removable Disk/H100/macOS/Presenter.dmg

Note: After the receiver that has TF card is plugged into the computer, a “NONAME” removable disk icon appears on the desktop of MacOS computer.

4.2 Software is Stored In Specific URL

Software download URLs are listed in the instructions and yellow strips that are stored in package. (URLs are case-sensitive)

Windows xp—windows7 version:

https://spotlight.oss-cn-shenzhen.aliyuncs.com/Presenter/H100/Normal/Windowsxp/PresenterH100_xp.exe

Windows 8 or above version:

<https://spotlight.oss-cn-shenzhen.aliyuncs.com/Presenter/H100/Normal/Windows/PresenterH100.exe>

MacOS10.10 or above version:

<https://spotlight.oss-cn-shenzhen.aliyuncs.com/Presenter/H100/Normal/Macos/PresenterH100.dmg>


Step 5: Install The Computer-Aided Software

5.1 Install The Software On Windows System


Considering many users often change their speech computers. We made the Windows version software as green software, i.e., it is pre-installed. You can double-click the application icon (.exe file) to run it. Or you can copy it into computer first.

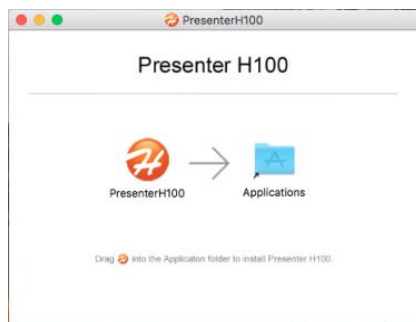
5.2 Install The Software On MacOS System

The software package (Presenter.dmg) of MacOS version needs to be installed prior to using.

- A) After double-clicking PresenterH100.dmg, the system will release a disk image file (Presenter ) to the desktop of MacOS computer.



B) Double click  to open the installation window as below.



C) Drag the icon  into Applications folder to install the software.

D) Check : Open “launchpad” , There is a application icon like  means installation is successful.

E) After installation is completed, you can delete the dmg file and eject “PresenterH00”file.

Now the software installation is complete. we need to run the installed software prior to using.

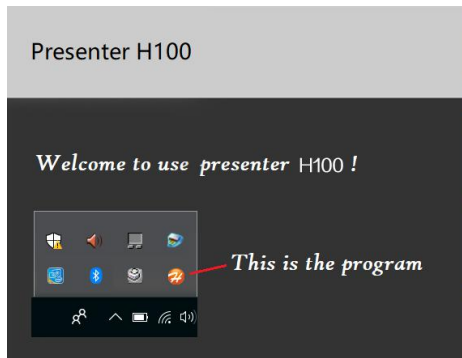
Step 6: Run The Computer Aided Software

6.1 Run Software On Windows System

Double click to run the executable file(PresenterH100.exe or PresenterH100_xp.exe) of corresponding version.

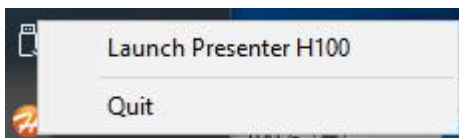
6.1.1 Where Is The Software After Starting

After the program is running, the welcome window appears for 2 seconds , and then disappear. Actually, the program did not stop. It's still running in the background. Its icon is loaded in the tray of the lower right corner of the desktop.



6.1.2 Software Setting and Quitting

Click the icon by the right mouse button to open the popup menu. You can choose to open the settings window or quit the software. Click the icon by the left mouse button to open the settings window directly.

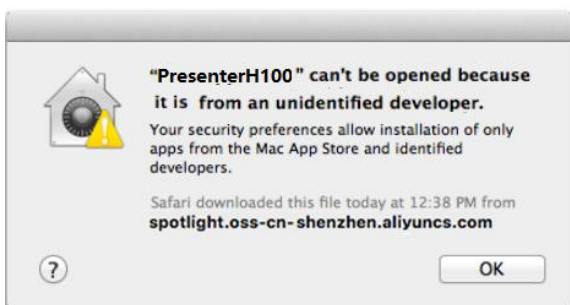



6.2 Run Software On MacOS System

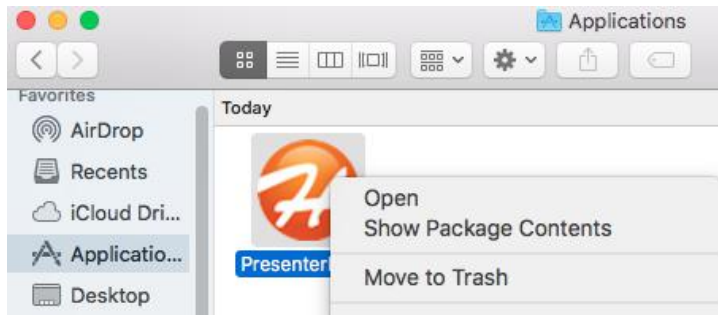
There are two ways to work with MacOS version software for the first running of the H100 software.

6.2.1 Pop-up Window “Open an app from an unidentified developer” Appears

When the “.dmg” file is downloaded by Safari, the following pop-up window will appear for the first time. This is a normal phenomenon. MacOS pop-up window appears while user run the program that is not downloaded from Apple store. This pop-up windows will not appear again after the following steps.



- A) Click “Finder 



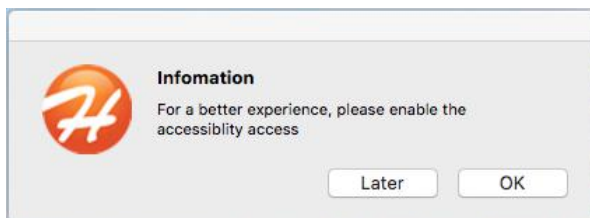
C) Click the "Open" button.



6.2.2 Pop-up Window "enable accessibility access" Appears

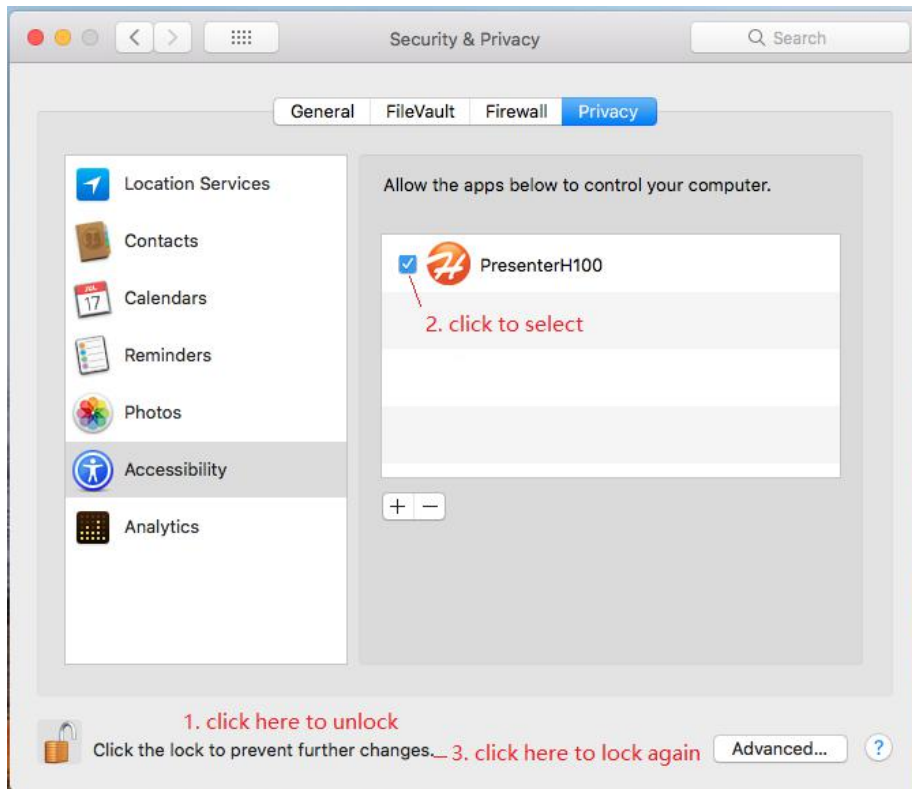
This step is the requirement of PresenterH100. It is only the first time usage that this MacOS pop-up window "enable accessibility access" appears. If it is for set up, this pop-up window will not appear again.

After clicking the "PresenterH100" icon in the "Launchpad", the following MacOS pop-up window appears.



1) Click "Later" that runs the software for this time. However, this pop-up window will appear for every run.

2) Click "OK" and the following pop-up window appears



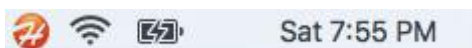
- 1) Click the bottom part to unlock (need to enter the login password).
- 2) Select the check box before PresenterH100 icon.
- 3) Click the bottom part to lock the setting again.
- 4) **Re-run the program** ("launchpad"-->"PresenterH100")

6.2.3 Where Is The Software After Starting


After the program is running, the welcome window appears for 2 seconds , and then disappears. Actually, the program did not stop. It's still running in the background. Unlike the Windows version, the icon of MacOS software is placed in the tray of the upper right corner of the desktop.


6.2.4 Software Setting and Quitting


Click the icon to choose to open the settings windows or to quit the software.




6.3 The Common Features for Window and MacOS

A) After the program is run, if it works correctly, the icon is .

If the presenter is not turned on or the receiver has not been inserted into USB port, the icon is .

B) When the icon is , clicking the icon will prompt you to insert the receiver or turn on the presenter.

When the icon is , click it to enter the setup window.

Step 7: Turn On The Presenter


Turn on the switch on the left side of the presenter.

A) The remaining time of the alarm timer is displayed under the presenter. “0” is displayed means alarm timer is not set.

B) If the presenter is work correctly, the presenter vibrates and the icon of program changes from black to orange.


Step 8: Check Performance of H100 presentor

After preparatory works have been completed, check to see the performance of the presenter H100.

Press and hold the key , then turn your wrist. What do you see? Does the screen of the computer have turned black, Just a white circle moving along with your wrist? How wonderful.

This is one of the many functions of Presenter H100. Now, let's introduce you all funtions of Presenter H100.

II. H100 Software Functions

When working, click the icon  of task bar to open the settings window.

1. Overviews:



The screenshot shows the 'Presenter H100' settings window. It is divided into several sections:

- Spotlight Settings:** Includes a preview image of a mountain scene with a spotlight. Annotations point to a checkbox for 'select if the mouse pointer appears or not' and a slider for 'select the darkness of spotlight'.
- Digital Laser Setting:** Includes a color selection wheel and a slider. An annotation points to the wheel with the text 'select the color of digi-laser'.
- Pointer Speed Setting:** A slider between 'S' (Slow) and 'F' (Fast).
- System Settings:** Includes 'Software Version 1.0.0.6' with an 'Update' button (software update), 'Help' with an 'Enter' button (open help PDF file), 'Auto Startup' (ON/OFF toggle, Software start automatically when the system startup), 'Dongle Anti-Lost' (ON/OFF toggle, receiver anti-lost function), and 'Alarm Timer' (ON/OFF toggle, Alarm Timer an editbox appears below after turning it on).
- Key Instructions:** Text at the bottom right explains that pressing and holding the key "⊙" and pressing the key "∧" or "∨" simultaneously zooms out or zooms in the aperture.

2. Scene Settings

Spotlight Mode: The background brightness can be adjusted by H100 software. And whether the mouse pointer icon is displayed or not is selectable.

Digi-Laser Mode: The color of the digital laser can be adjusted.

Aperture size is adjusted on the presenter for ease of use (see [combination key](#) chapter). The software will save the aperture dimensions data for different scenes.

3. Pointer Speed Setting

Drag the scroll bar to adjust the speed of the mouse pointer ("S" means slow. "F" means fast)

4. Auto-Startup:

The software starts automatically when the operating system startup.

5. Anti-lost

After the wireless is disconnected for 20 seconds (the presenter is off), the computer will play a sound to prompt you to remove the receiver if the receiver is still plugged. (default: function closed)

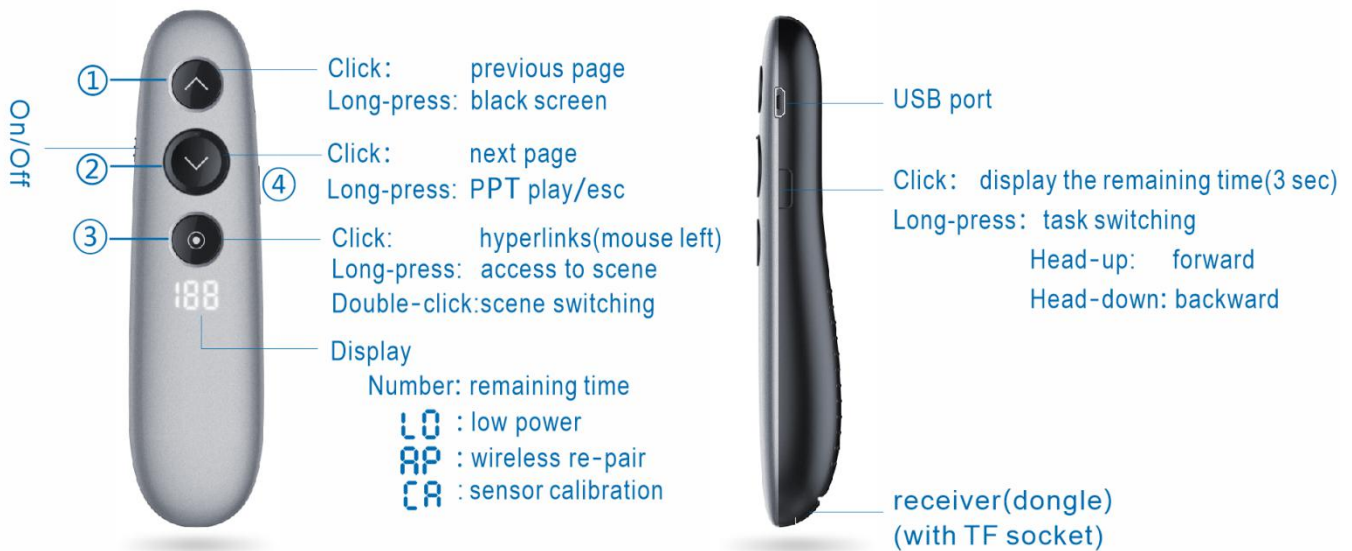
6. Alarm timer

Set the alarm timer (maximum: 199 minutes) in spotlight setting window.

When meeting timer is up, the H100 presenter will vibrate to alert you. You can click the side key④ of H100 presenter any time to view the remaining time of alarm timer.

III. H100 Presenter Functions

1. H100 Key Descriptions



Click: press the left mouse button and lift it immediately

Long-press: press and hold for at least a second.

2. Combination Keys

2.1 Increase The Aperture

Press and hold key ③. After entering the scene, simultaneously press the key ① to increase the aperture.

2.2 Reduce The Aperture

Press and hold key ③. After entering the scene, simultaneously press the key ② to reduce the aperture.

3. Other Functions

3.1 After Startup

Open the H100 presenter to show the remaining time of alarm timer. If the timer is not

set, "0" will be displayed. When displaying "LO" and flashing for three seconds it means low voltage, and the battery is low. Battery needs to be charged.

A vibration of motor means wireless is connected with receiver after turn-on. If no motor vibration, please check whether the receiver is properly plugged into the USB port of the computer.

3.3 Charging

In the charging state, the red light near the USB port of the presenter is on, and the light will go off when the battery is fully charges (about a hour) .

3.4 Wireless Repair

If H100 presenter cannot connect to receiver (receiver is plugged, but the presenter doesn't work), you can try to repair it with the receiver in the follow steps:

- 1) Press and hold the key① + key②, and then turn on the presenter. If "RP" is displayed means the presenter is in repair mode.
- 2) Plugging in USB receiver and then turn on the H100 presenter, press and hold the key③ and move it close to the receiver (in 20cm). The repair is successful if the spotlight scene mode can be entered.

III. H100 Special Cases

1. Nothing Happened After Turning On H100

If the H100 presenter shows nothing after turning on, check if the battery is low. If it is something else, you need to look up the reason as listed in section III. [H100 key descriptions](#).

2. H100 Is Not Working Properly

A) Please make sure the battery is not low and the receiver is correctly inserted into USB port (check the orientation of receiver insertion)

B) Make sure the software is running. In fact, even if the software is not running, the mouse pointer can move around with your wrist when press and hold the key③.

You need to repair H100 presenter with the receiver. (see section III 3.4 “[Wireless repair](#)”)

3. Mouse Pointer Drifts In Scene Mode

The gyro sensor needs to be recalibrated when the mouse pointer movement appears to be drifting. The operation steps are as following :

- 1.) Press and hold key③ + key④ and turn on the H100 presenter, “**CR**” sign is displayed that indicates it is in the calibration status.
- 2.) Put the H100 presenter on the desk **statically** until the “**CR**” sign disappears. It shows the calibration is successful.

Note: **During gyro sensor recalibration, H100 presenter cannot be placed on a shaking or slightly vibrating table.**